



THE DOVEY DROP IN CONVEYOR CROSS WALK: LILY PAD STYLE.

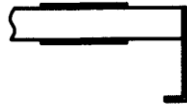


- Main frame is manufactured from hot rolled flat steel.
- Rollers are manufactured from zinc flow coat tubing with precision bearings with 5/8 hex shaft.
- Rollers are 2.500" diameter x 11 gauge rollers on 3" centers.
- Rollers are secured in line by three (3) shafts each holding three (3) rollers in line.
- Cost of standard 60" x 9" unit is \$374.00 Other sizes available upon request.

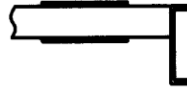
For more information please contact:

DOVEY CORPORATION
P.O. Box 2249 – 3220 W. 25th. St.
Anderson, IN 46018
Ph.# 800-457-2576 ** Fax.# 765-649-1934

DROP IN CROSS WALK (LILY PAD STYLE)



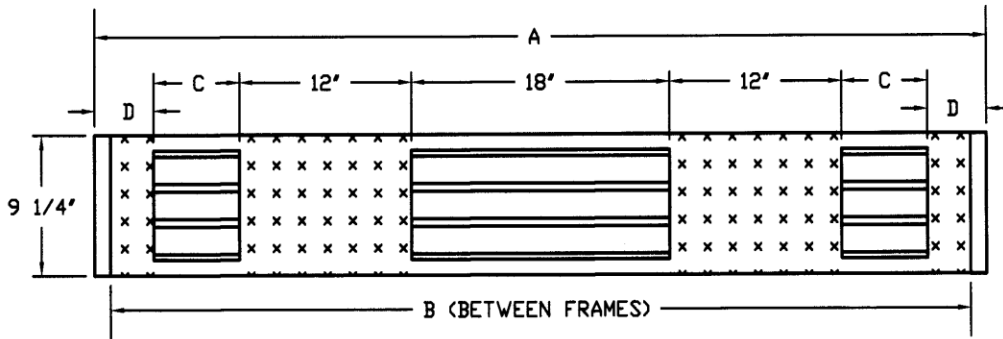
FL6 SIDEFRAME



C-5 SIDEFRAME



SPRING LOADED



CONVEYOR MAKE _____
 CENTER DRIVE ____ OR SIDE DRIVE ____

GROUP	A	B	C	D
60	62	59 3/4	6	4
72	74	71 3/4	9	7
84	86	83 3/4	12	10
96	98	95 3/4	18	10

DOVEY CORPORATION
 PH. 765-649-2576

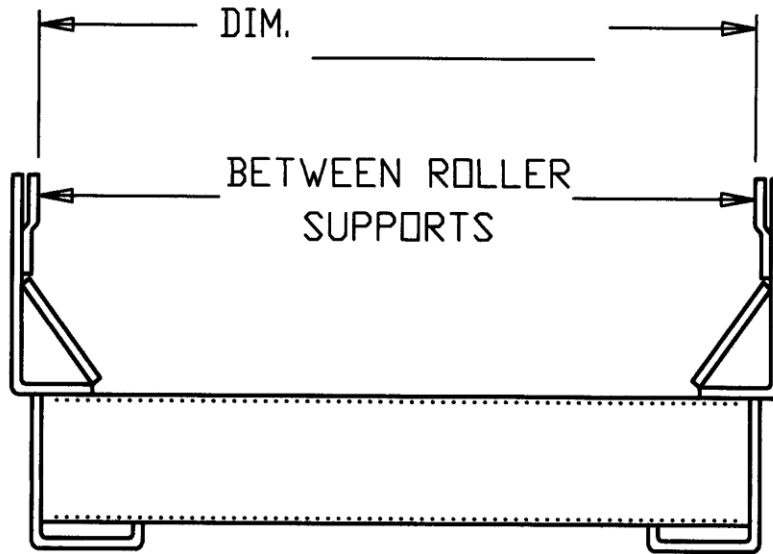
PLEASE USE ABOVE SPECS TO ASCERTAIN WHAT SIZE AND

TYPE CROSS WALK YOU REQUIRE.

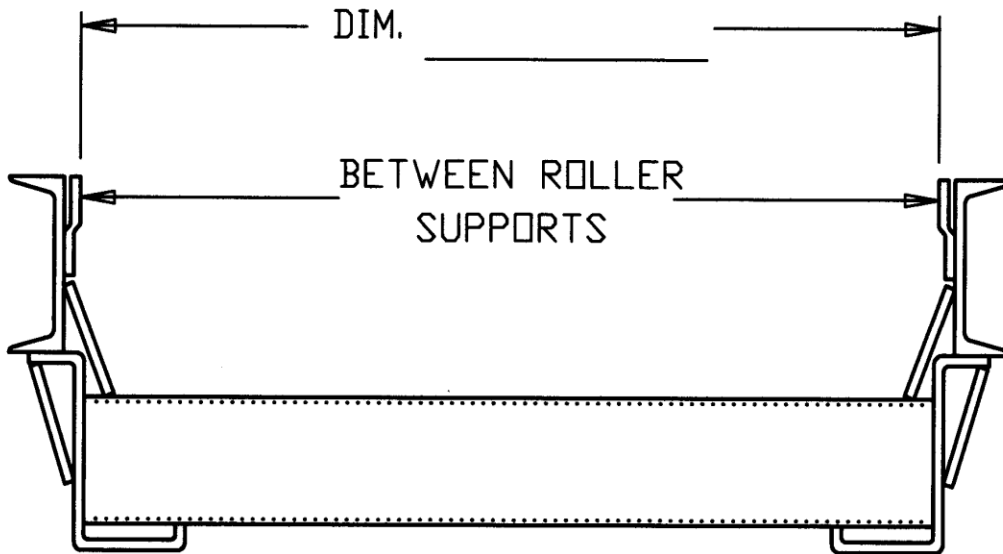
DOVEY CORPORATION

Ph.#800 457 2576

Fax.#888 649 2576



FL6 LIFT-OUT ROLLER SIDEFAME



C5 LIFT-OUT ROLLER SIDEFAME

COMPANY: _____

CITY/STATE: _____

CONTACT: _____