



Are you losing valuable production time and money on your corrugator due to bagging, wrinkling, uneven heat transfer, weaving or warp?

The EquaLiner 1000

- Equalizes cross-web tension;
- Improves heat transfer and bonding;
- Compensates for worn or misaligned components;
- Has 360° correction capability, that allows for use in wrap arm dancer and idler rolls;
- Is 100% mechanical;
- Self-aligns;
- Is easy to install; and
- Requires minimal Maintenance;

Replaces Wrap Roll on Preheaters and Preconditioners



EquaLiner 1000™

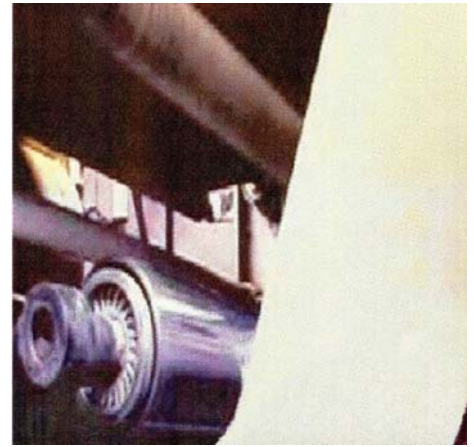
Web Tension Stabilizing System

The **Equa-Liner 1000** is a patented system designed for corrugators to eliminate cross-web tension problems, improve quality and increase running speeds. Its unique method of “reading” and “self-aligning”, allows the substrate to track straight, by continually correcting for web tension imbalance.

The **Equa-Liner 1000** reacts to the web, DOES NOT steer the web.

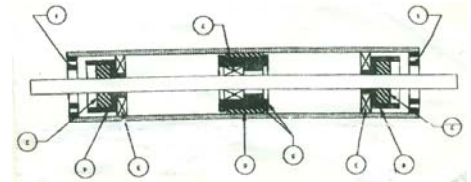
The **Equa-Liner 1000** is a stand-alone replacement for wrap arm rolls, dancer rolls and intermediate idler rolls. It is compact and 100% mechanical, requiring no external power. It is 6” OD and comes in all sizes of corrugator widths.

FOR MORE INFORMATION ON THE PRODUCT LISTED HERE, PLEASE CLICK ON THE LINKS LISTED BELOW



MAINTENANCE

The **Equa-Liner 1000** works 24 hours a day, 7 days a week adjusting for tight and loose webs, out of alignments and even bad bearings. Sooner or later the packing and perhaps even the bearings will wear out, and if these are not replaced when necessary other parts can begin to wear out.. Over the years we have noticed that some plants regularly replace packing (recommended once a year) and bearings (inspect when replacing packing), other plants we never hear from. Sooner or later they send one in for a complete rebuild. An **Equa-Liner 1000** is much like your car, take care of it and it will take care of you, and if you do not take care of it, prepare for big problems down the road.



- (1) Balance Ring;
- (2) Packing;
- (3) Outer Bearing;
- (4) Packing Housing;
- (5) Bearing Housing;
- (6) Expansion Sleeves; and
- (7) Center Bearing.