

UPPER SLOT HEAD REPAIR PROCESS.

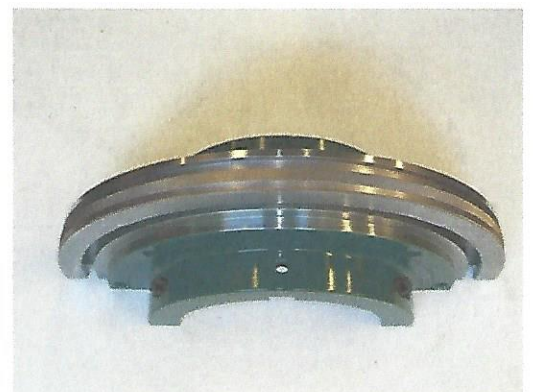
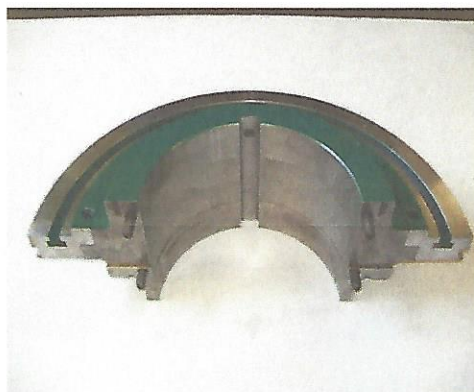
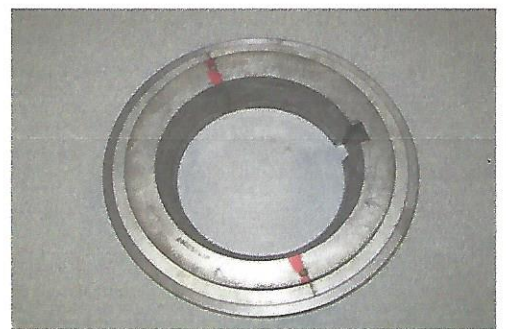
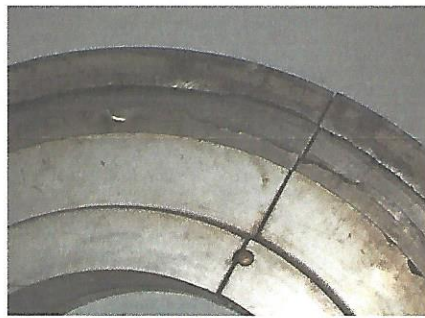
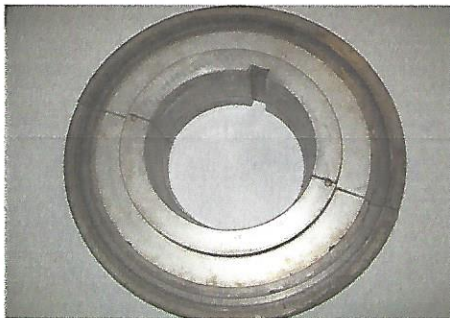
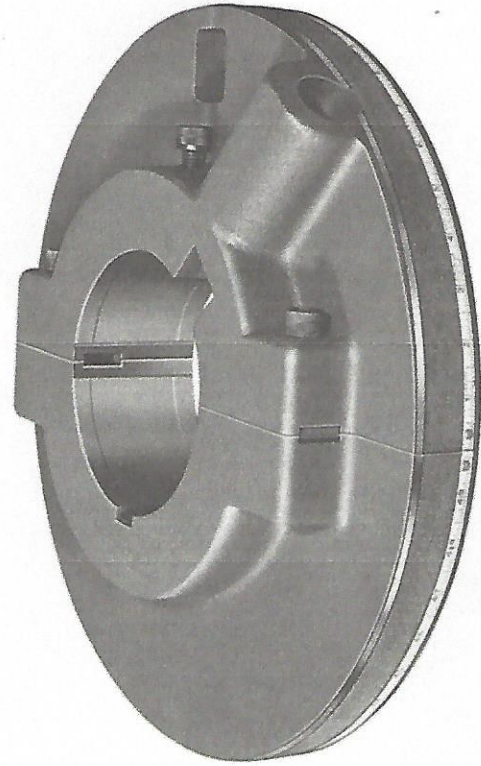
For more info please call :

DOVEY CORPORATION
P.O. Box 2249 – 3220 W. 25th. St.

Anderson, IN 46018

Ph.# 800 457 2576 ** Fax.# 888 649 2576

- The head is repaired by removing knife step and outer T slot, and then machining it to accept replacement flame cut steel shoulder incorporating setup scale and cavity for rack adjustment if necessary.
- **SET UP TAPE IS REPLACED.**
- **HEADS ARE TRUED ON A SHAFT FOR ACCURATE RUN OUT.**
- **AVERAGE COST, 40% TO 50% OF REPLACEMENT COSTS.**



1. Damaged slot head 2. Close up of damage. 3. Slot head after T slot removed 4. Replacement steel ring for new T slot. 5. Finished slot head showing new T slot 6. Vertical view of head showing knurl on circumference + set up tape.