

# DOVEY CORPORATION

3220 W. 25<sup>th</sup>. St.

Anderson, IN 46011-4617

Ph.# 800 457 2576 \*\* Fax.# 888 649 2576

Please visit us at: [www.dovey.us](http://www.dovey.us)



**DOVEY BEARCLAW TAB HOLDERS**, one (1) leading or one (1) trailing, manufactured in quality carbon steel and designed to mount on existing upper slotter stitch lap head. Incorporating serrated stitch tab knife for use on Urethane Stitch Lap anvil, with radial urethane ejection strip. Sizes are 1 5/8" or 2" widths. Others are available.

**\$1,135.00 each holder**

**COST OF REPLACEMENT INSERT: Pt. # TSU-1**

**\$17.40 each**

**DELIVERY:** Approximately 4-6 weeks after receipt of order.

**TERMS:** Net 30 days

**FOB:** Anderson, IN

We are at your service. If you have any questions, please do not hesitate to contact us.

## Dovey Corporation

3220 W. 25<sup>th</sup> St. • Anderson, IN

Phone (800) 457-2576 • FAX (888) 649-2576

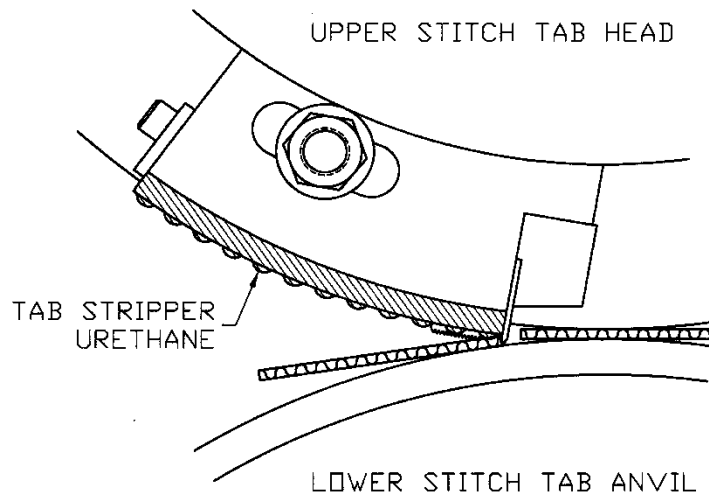
Your Dovey Area Managers are:

Gary Lovelace (850) 206-3823 • Drew Lovelace (850) 723-2963

Web Site: [www.corrugatedonline.net](http://www.corrugatedonline.net)

E-Mail: [gary@dovey.us](mailto:gary@dovey.us)

# THE DOVEY BEARCLAW TAB STRIPPER; LEAD & TRAILING EDGE.



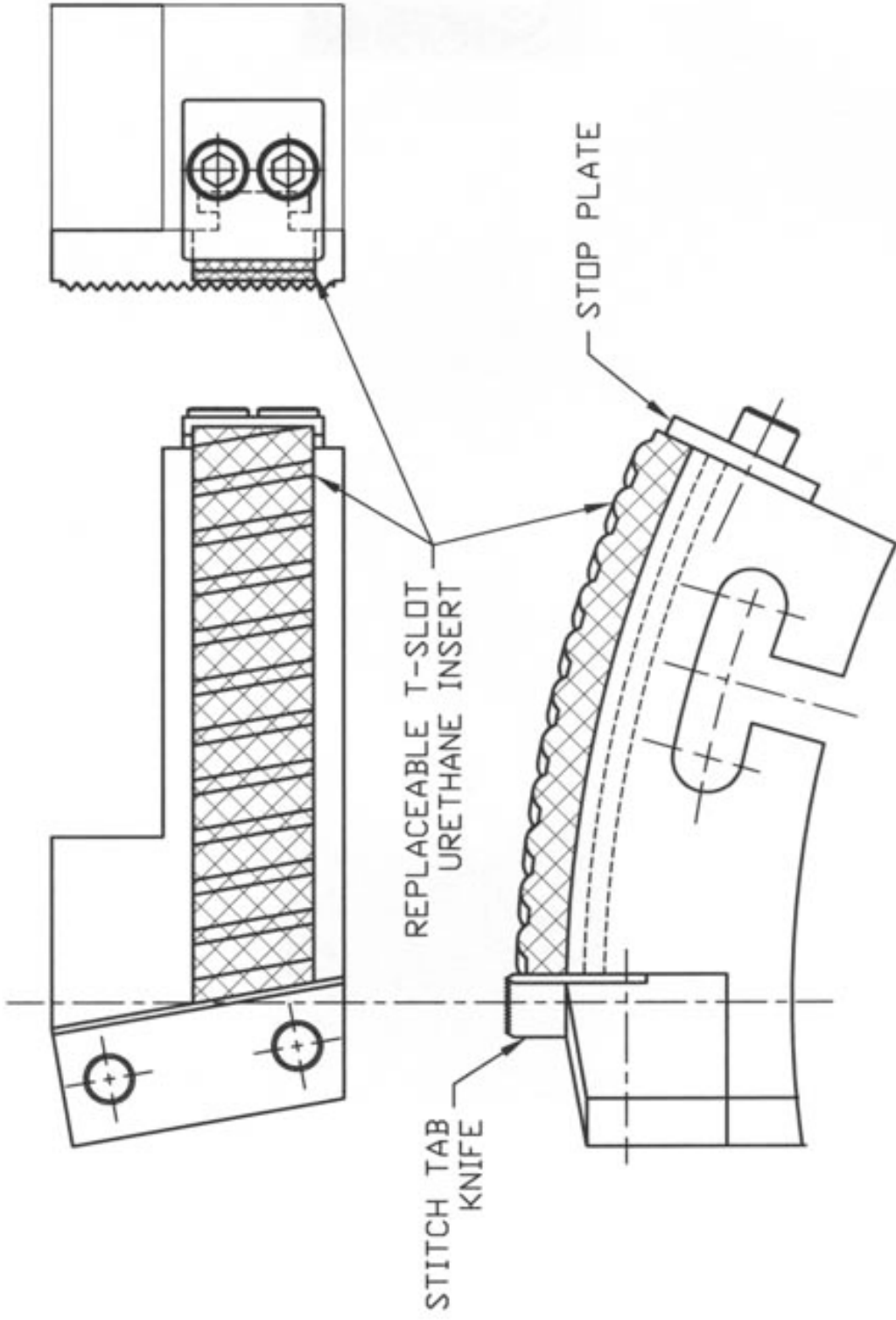
D:\CAB-HEV\US\Bear Claw Tab Stripper Block - 052509.dwg

- ***Guaranteed to strip 99% regardless of size of Tab scrap.***
- ***Manufactured as part of standard glue tab holders on slotter heads, 35" and up .Complete tab/stripper holders supplied only.***
- ***For use on both the lead & trailing edge of the tab flap.***

*For more information please contact:*

DOVEY CORPORATION  
P. O. BOX 2249  
ANDERSON IN 46011  
Ph.# 800 457 2576 \*\*\* Fax. # 888 649 2576  
[www.dovey.us](http://www.dovey.us)

DOVEY CORPORATION  
ANDERSON, IN  
PH. (765) 649-2576



S & S STITCH TAB BLOCK  
WITH TAB STRIPPING URETHANE

SPEC SHEET TO BE COMPLETED AND RETURNED WITH ORDER, SO THAT CORRECT  
SPECS CAN BE CONFIRMED.

DOVEY CORP.  
3220 W. 25th STREET  
ANDERSON, IN 46011  
PH. 765-649-2576  
FAX 765-649-1934  
email order@doveyco.com

UPPER SLOTTER HEAD  
SPEC. SHEET

CHECK ONE  
3/8 "T" BOLT   
1/2 "T" BOLT

