

## Specialty Rolls

Since 1968, we have manufactured over 500 specialty rolls and assemblies for the Corrugated Box Industry. Here are some of our most popular:

### General Taper Rolls...



We manufacture both OEM Style and No Crush General Taper Rolls

**WI-141**, 4" OD x 8" Face Width, OEM Style Grooved. OEM# MM001426

**WI-142**, 4" OD x 4" Face Width, OEM Style Grooves, OEM# MM001679

**WI-143**, 4" OD x 2.5" Face Width, OEM Style Grooves, OEM# MM001677

**WI-1032**, 4" OD x 8" Face Width, Slotted, OEM Style Grooves, OEM# MM001680

**WI-1036**, 4" OD x 8" Face Width, Stepped, OEM Style Grooves, OEM# MM001678

**WI-2615**, 4" OD x 8" Face Width, Wagner No Crush

**WI-2625**, 4" OD x 4" Face Width, Wagner No Crush

**WI-2626**, 4" OD x 2.5" Face Width, Wagner No Crush

**WI-2627**, 4" OD x 8" Face Width, Slotted, Wagner No Crush

**WI-2628**, 4" OD x 8" Face Width, Stepped, Wagner No Crush

**Bobst-Post/Post Pulley, Belt Pulley, Nip Rolls...** These are an example of what we can do on Post and many other pieces of equipment.



WI-3387

WI-3543

WI-3562

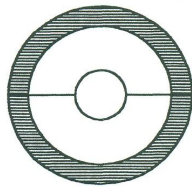
**WI-3387**, Folder Gluer Pulley Roll, 9.409 OD

**WI-3543**, (OEM# 990721) Crowned Belt Pulley Roll, 9.409" OD x 3.975" W

**WI-3562**, (OEM# 207685 Nip Roller, 2.756" OD

### Bostitch Stitcher Rolls...

New or Recovered



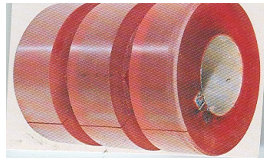
**WI-139**, Split Core Stitcher Roll, 4.5" OD x 2.0" Wide

**WI-140**, Split Core Stitcher Roll, 4.0" OD x 2.0" Wide



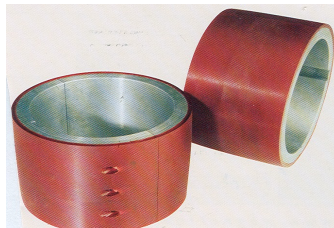
Everything we sell is Manufactured at our plant in FRACKVILLE, PA, USA  
Wagner Industries, since 1968

### Quickroll Pull Roll...



Made to your specification  
Cost about 50% of Knurled Steel Pull Rolls and is recoverable for 50% of our new price

### Split Rolls and Roll Recovering



Over the years (since 1968) we have manufacture and recovered hundreds of different Split Rolls and Urethane Recovering. This is our specialty. Let us quote your

### George Martin Snubber



**WI-4619**, George Martin Snubber Wheel



**800-874-1998**

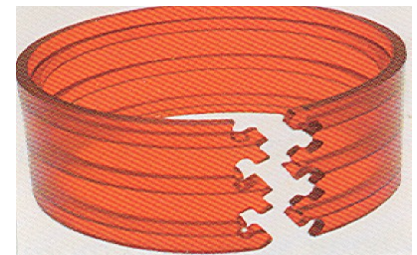
Wagner Industries is represented in your area by:

**Gary Lovelace & Associates**

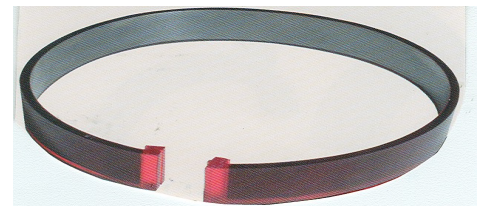
Cell: 850-206-3823

[gary@corrugatedonline.net](mailto:gary@corrugatedonline.net)

### Stitch Lap Anvil Covers...



Our Catalog lists 219 Puzzle Lock, One Piece Stitch Lap Anvil Covers. See our Catalog for a complete cross reference list



Our unique Metal-Reinforced (meshed in rubber on mounting side, for strength), offer superior strength. Try one today.

Current sizes shown below

**WI-3250**, OEM# 277C, 50" Prime/S&S 2.220" Wide

**WI-3210**, OEM# 273C, 50" Koppers

**WI-3249**, OEM# 1104C, 51" Curioni

**WI-3234**, OEM# 109C, Langston

**WI-3259**, OEM# 526C, 50" Prime/S&S, 3.220" Wide

**WI-3260**, OEM# 296C, 38" S&S (701, 704, ZLA, ZLB)

**WI-3266**, OEM# 280C, 37.5" Lang. Saturn

**WI-3282**, OEM# 428C, 37.5" Ward

**WI-3283**, OEM# 289C, 50" Ward

**WI-3284**, OEM#417C, Martin 924

**WI-3296**, OEM# 290C, 38" S&S ZLM